

This research was carried out at the Jet Propulsion Laboratory, California Institute of Technology, under a contract with the National Aeronautics and Space Administration. Copyright 2011 California Institute of Technology. Government sponsorship acknowledged.

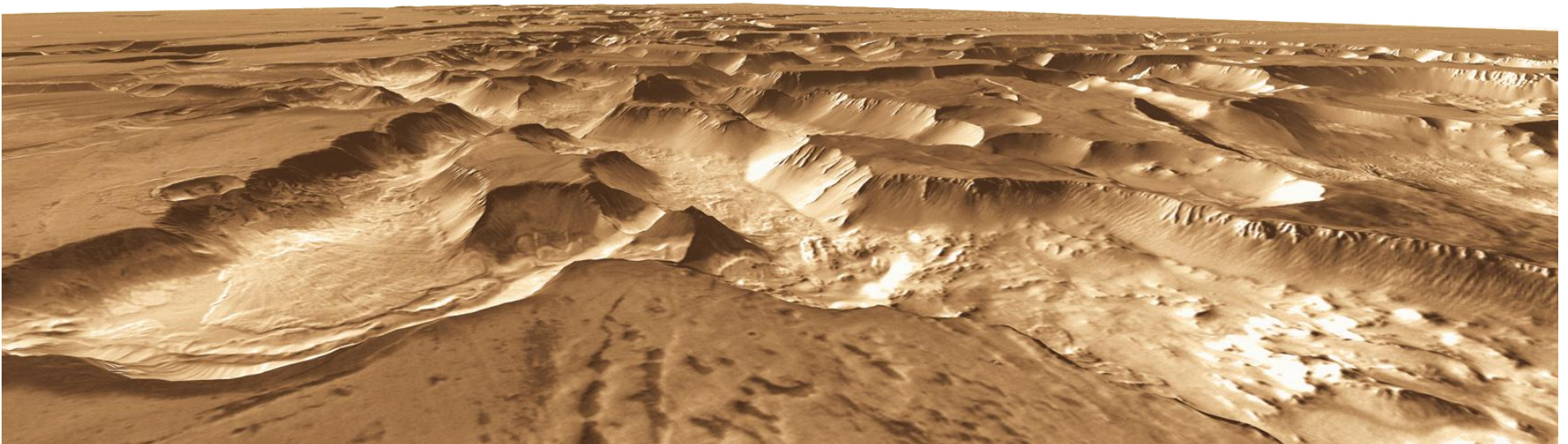
# Broader Interests and Applications

## The view of a JPL Hardware Engineer

Randy Lindemann

Jet Propulsion Laboratory, California Institute of Technology

August 19, 2011

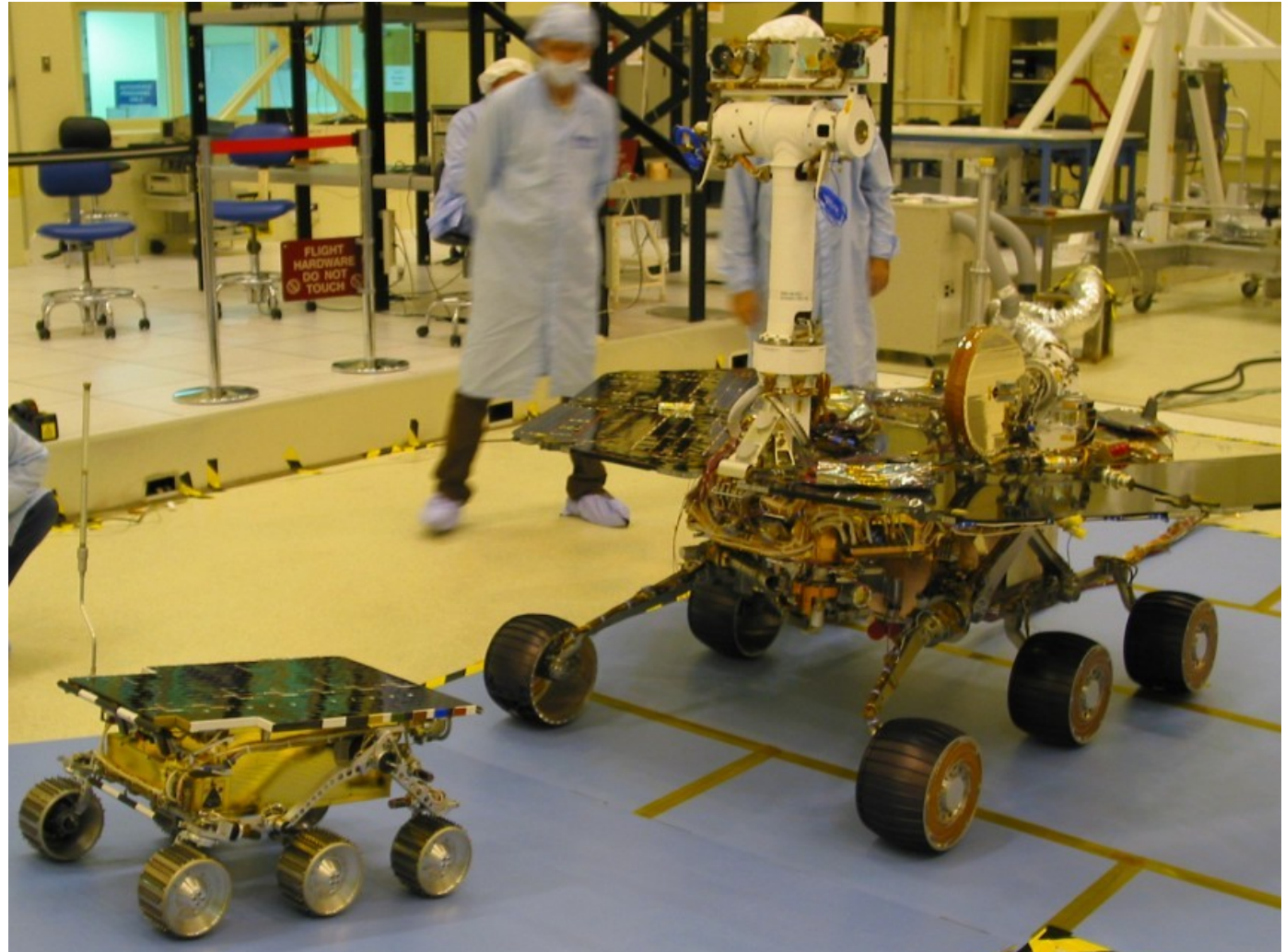




## MER Flight Vehicle, 'Spirit', during Integration & Test



- The Rocker-Bogie mobility suspension is comprised of 6 driven wheels, with the outer 4 wheels steerable
- The Rocker-Bogie suspension utilizes a differential and linkages to effectively equilibrate the wheel loads during drives
- The first rover to Mars, Sojourner, also utilized a rocker bogie suspension

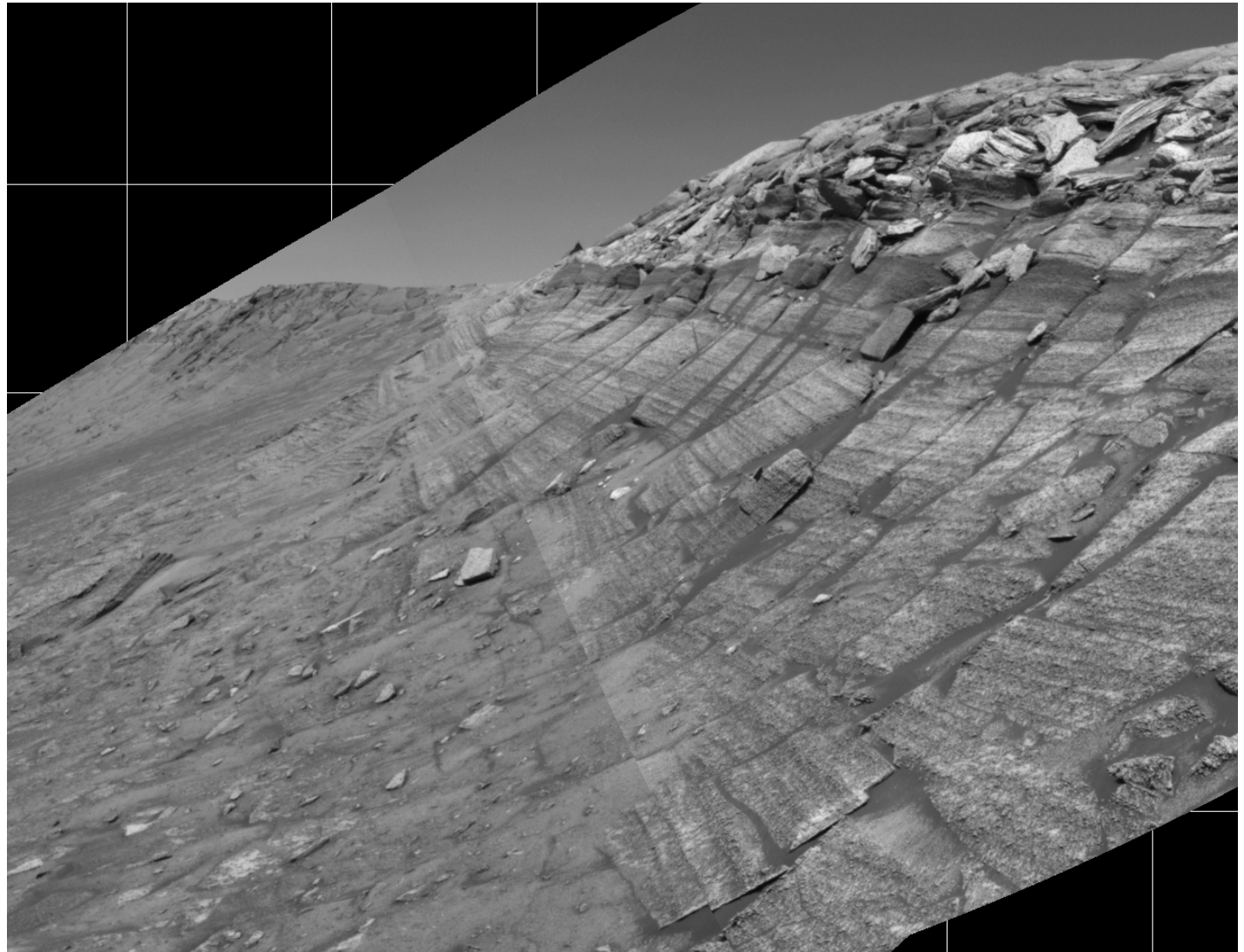


The rover *Spirit* shown behind *Marie Curie* from the Mars Pathfinder mission



# MER Mobility Requirements

- Last 90 “sols” on Mars
- Drive up to 1 km
- Traverse obstacles up to 25 cm in height
- Traverse over very soft soils
- Be statically stable while tilted in any direction up to 45 degrees
- Not be “torque limited”,
- Perform precision drives to science targets
- Wheels designed to achieve a low engineering ground pressure on soft terrain



View from the rover *Opportunity* of the Burns Cliff formation, Endurance crater RL - 4

# Rover and Wheel Properties

## Curiosity (Mars Science Laboratory)

Mass = 960 kg (current best estimate)

Rover Weight on Mars = 3572 N

Average Weight per Wheel = 595.3 N

Wheel Center Diameter = 0.500 m (with cleats)

Wheel Outer Diameter = 0.465 m (with cleats)

Wheel Width = 0.400 m

## Spirit and Opportunity (MER)

Mass = 176.5 kg

Rover Weight on Mars = 656.7 N

Average Weight per Wheel = 109.45 N

Wheel Center Diameter = 0.262 m (with grouser bars)

Wheel Outer Diameter = 0.232 m (with grouser bars)

Wheel Width = 0.16 m

## Sojourner (Mars Pathfinder)

Mass = 10.5 kg

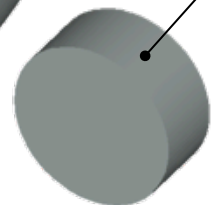
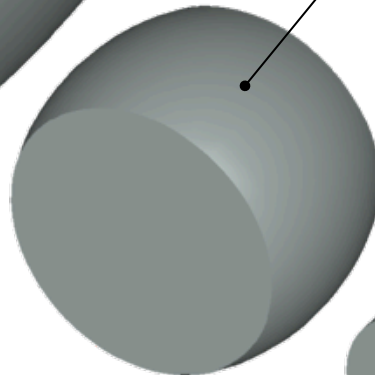
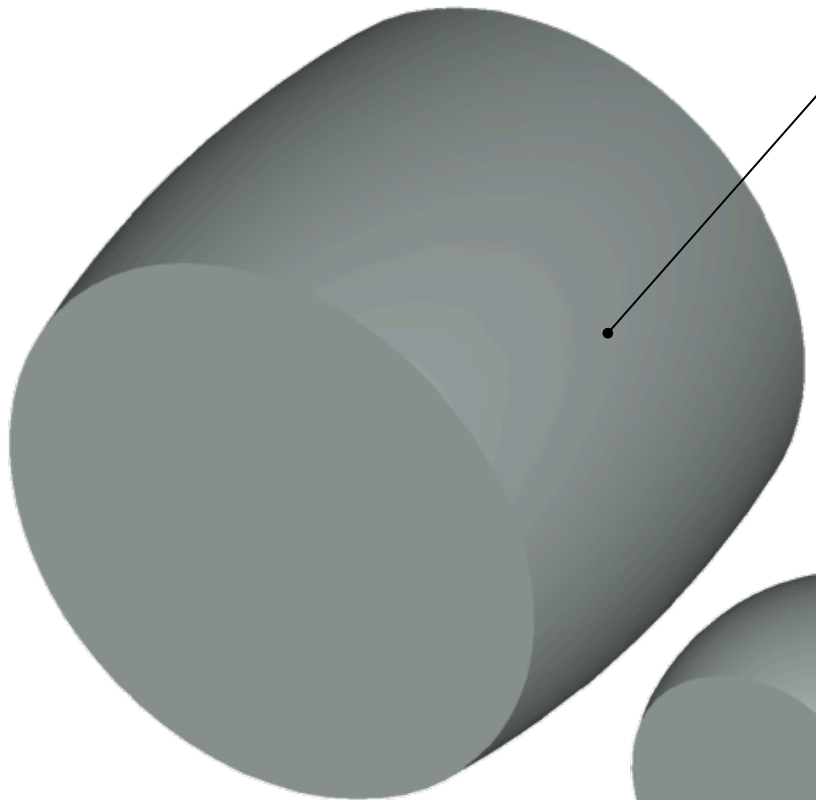
Rover Weight on Mars = 39.07 N

Average Weight per Wheel = 6.511 N

Wheel Diameter = 0.137 m (with cleats)

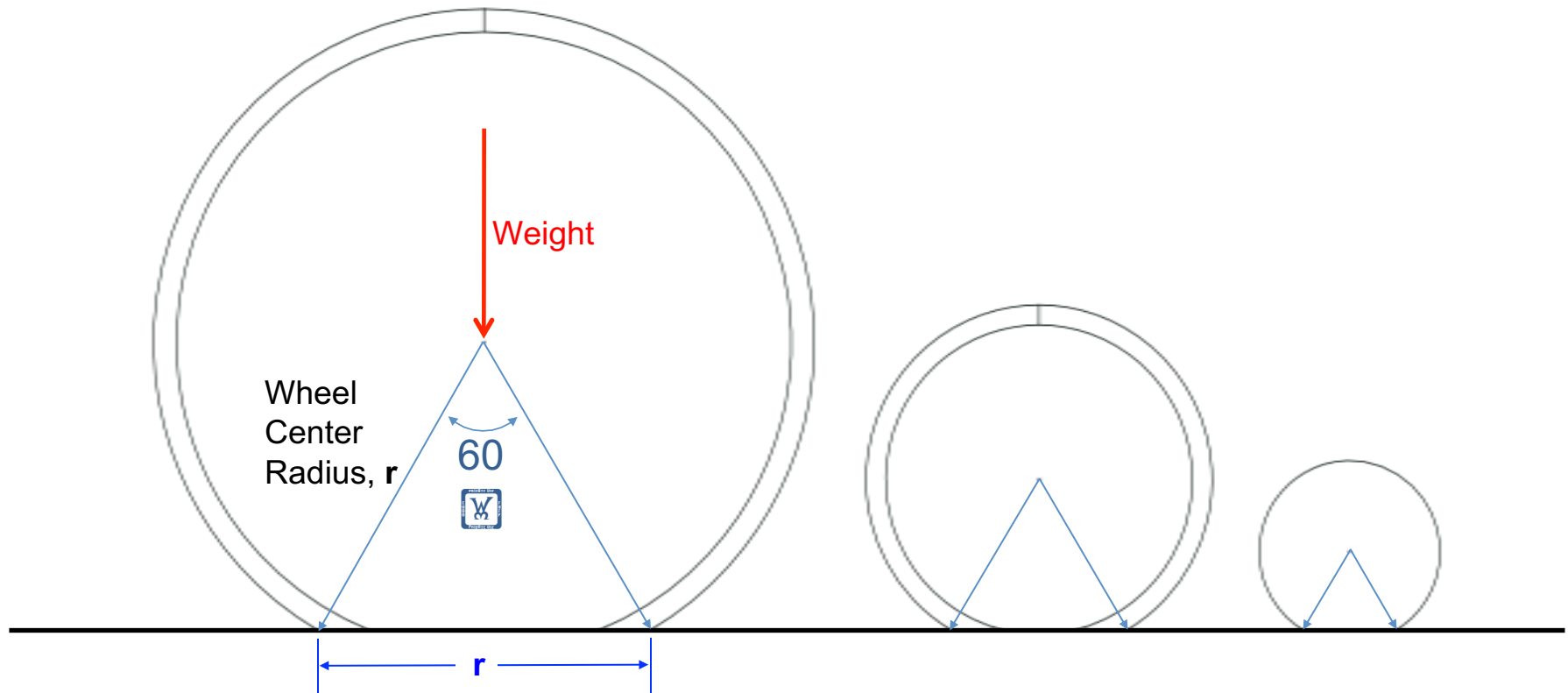
Wheel Width = 0.06 m

Isometric Views of Rover  
Wheel Envelopes to show  
relative sizes



# *defining* Effective Ground Pressure

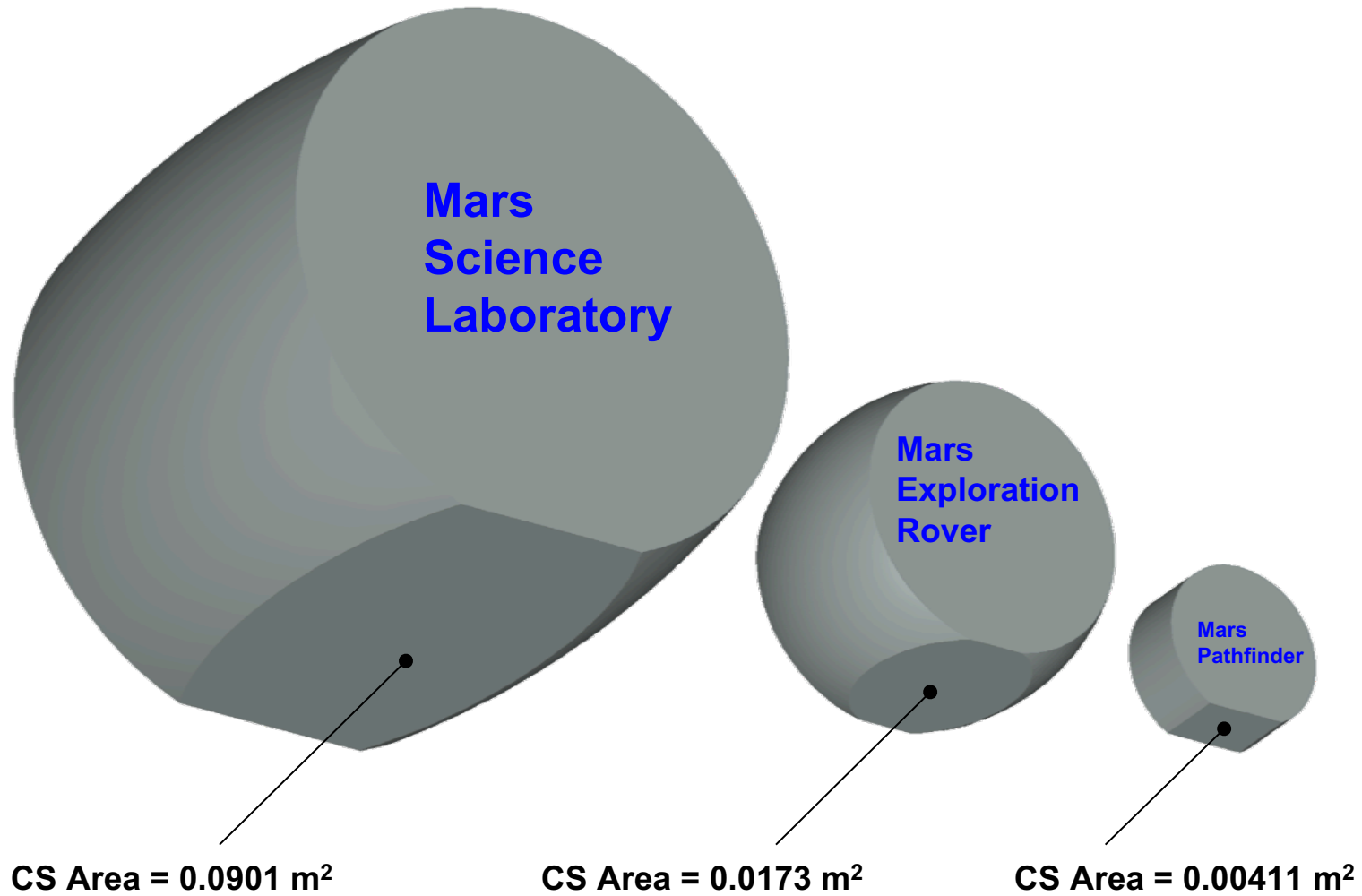
An engineering metric for rover comparisons and scaling



The **Effective Ground Pressure**, EGP, metric is defined as the *average pressure under the average wheel*. The average weight on a wheel is first found by dividing the total vehicle weight on a planetary body by the number of wheels. The EGP is found by dividing the average weight by the cross sectional area of the wheel's contact patch on the ground plane, after the wheel has sunk into a terrain so as to have a contact patch length of one wheel radius. In the case of non-cylindrical tires, the largest radius, usually at the mid-plane is used. When the wheel's periphery has cleats, lugs, or grouser bars; a determination is made as to the amount of their height added to the tire diameter, based on the projected area ratio of these tractive elements.

# Cross-Sectional Area of each Wheel's Contact Patch with the Ground Plane:

Determined via CAD Analysis



# Effective Ground Pressure Comparisons: Planetary Rovers on Mars

- Mars Pathfinder – *Sojourner*

- EGP = Average Weight/CS Area =  $6.511 \text{ N} / 0.00411 \text{ m}^2 = 1586 \text{ N/m}^2$   
= 1586 Pa **(0.23 psi)**

- Mars Exploration Rover – *Spirit and Opportunity*

- EGP = Average Weight/CS Area =  $109.45 \text{ N} / 0.0173 \text{ m}^2 = 6335 \text{ N/m}^2$   
= 6335 Pa **(0.919 psi)**

- Mars Science Laboratory - *Curiosity*

- EGP = Average Weight/CS Area =  $595.3 \text{ N} / 0.0901 \text{ m}^2 = 6609 \text{ N/m}^2$   
= 6609 Pa **(0.959 psi)**





# MER Mobility Testing

- Testing under mobility conditions was performed on a 5 meter square tilt-able platform called the Variable Terrain Tilt Platform (VTTP)
- The slope of the VTTP could be set between 0 and 30 degrees
- The surface was initially bare, and later covered with dry and loose quartz sand
- Obstacles could also be attached to the platform



**Dynamic Test Model rover driving up a 15 deg slope, climbing a 25 cm obstacle**



# MER Mobility Testing

continued



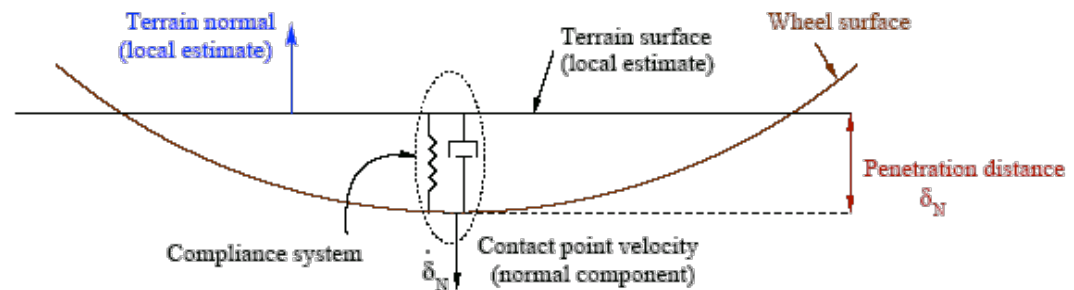
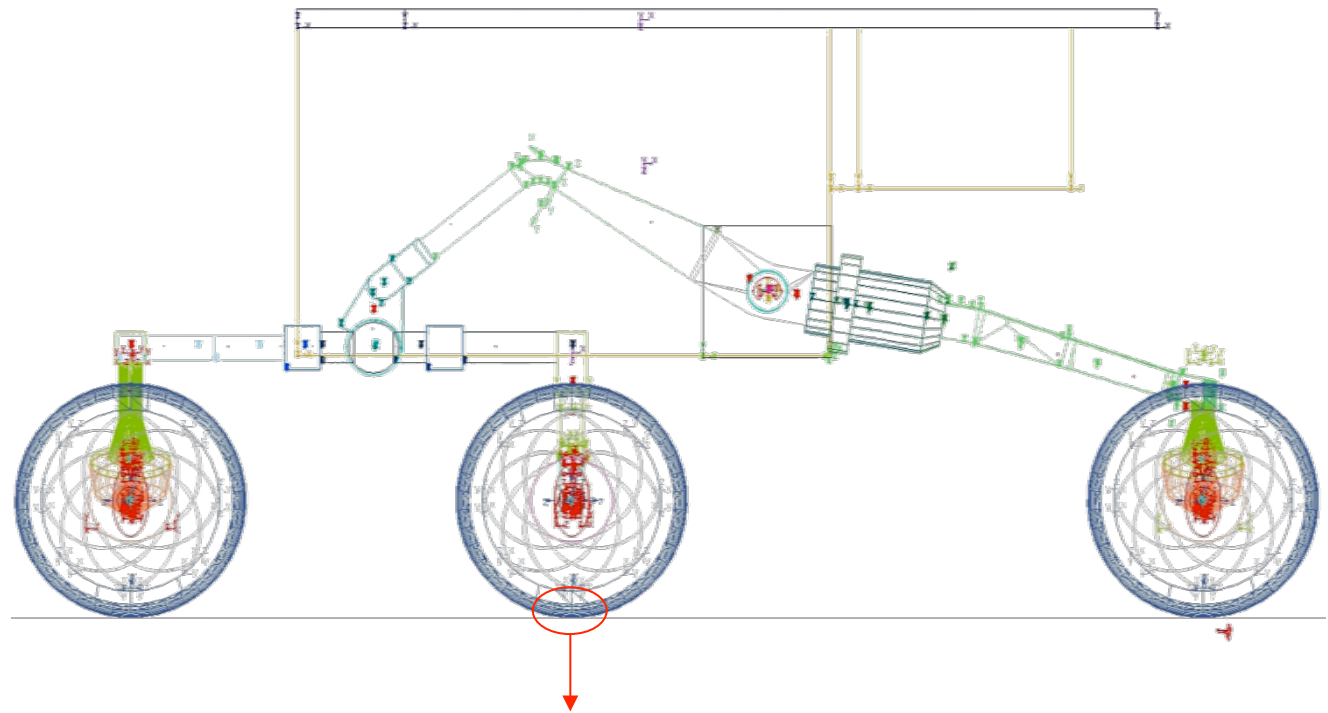
**DTM Rover driving cross-slope on the VTT, at a 20 deg slope, and covered with 20 cm of dry, loose quartz sand**



# Mobility Dynamic Model

## Original Contact Formulation

- Physical Idealizations in the **MSC.ADAMS** Rover Model
  - Rigid WEB with mass and inertia
  - Mass and stiffness based on FEM
  - Compliance in suspension, wheels, and torque tube
  - All struts and tubes modeled with Timoshenko beam forces
  - Differential relationship added algebraically
  - Empirical values for damping and friction

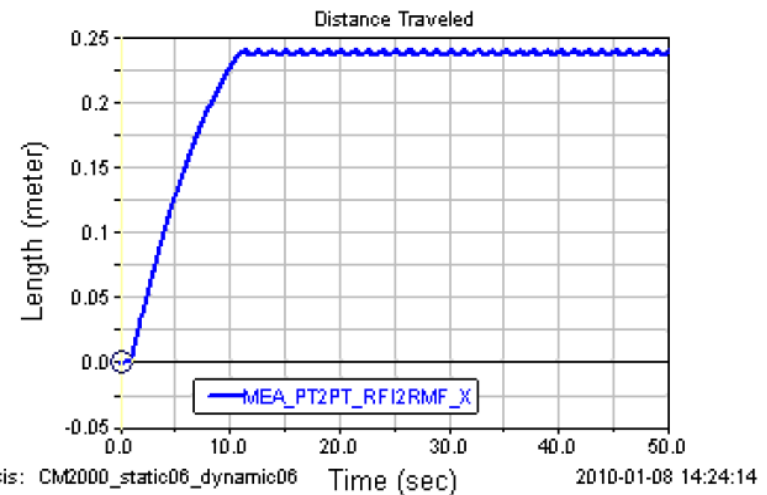
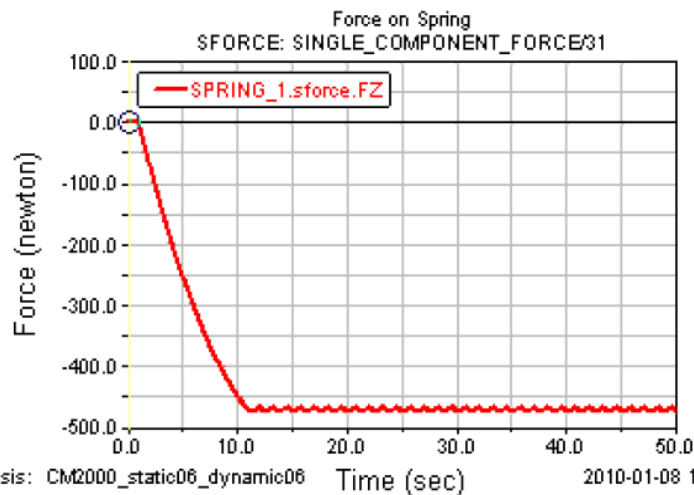
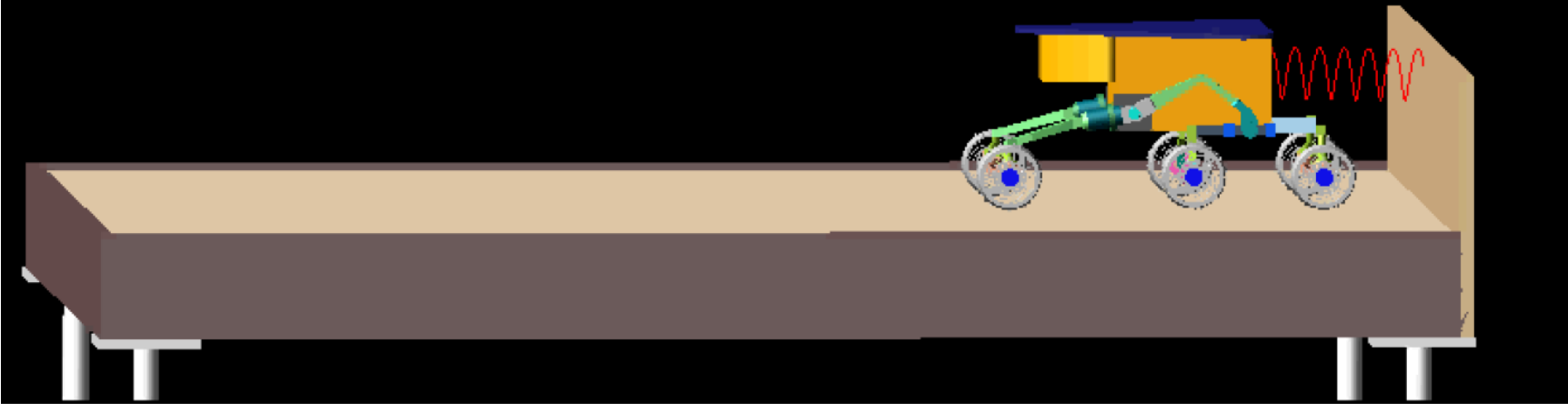




# Preliminary ADAMS Simulations

## Current development focuses on Terramechanics

CM2000\_static06\_dynamic06 Time= 0.0000 Frame=001



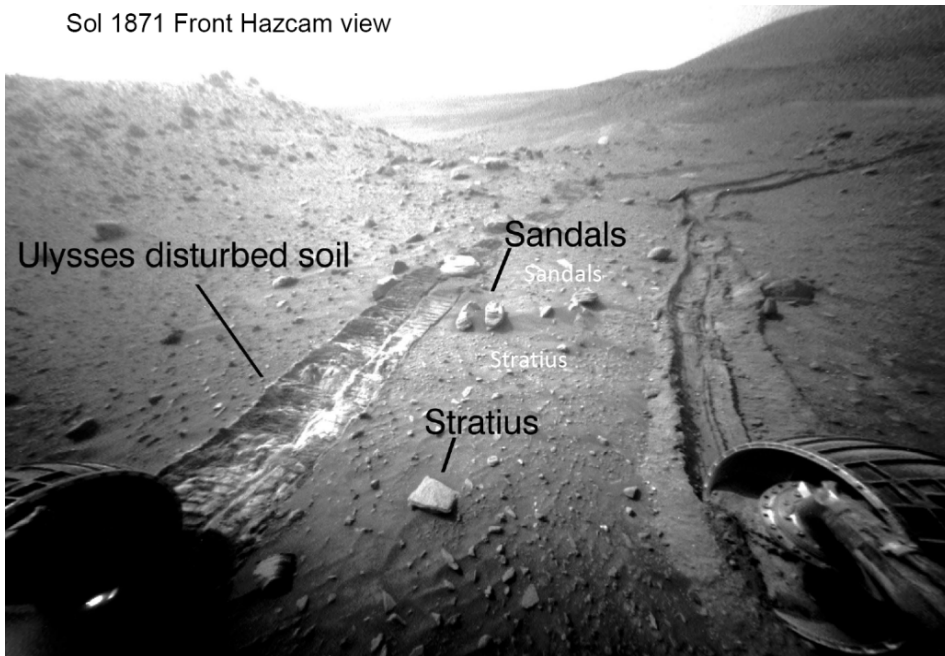
As a result of Spirit's mobility issues, a team led by the Project's Deputy Principal Investigator, Prof. Ray Arvidson of Washington University in St. Louis, has begun employing Multi-Body Dynamic Simulations, utilizing the commercial software MSC.ADAMS, to analyze the wheel terrain interaction, or Terramechanics of Spirit in the hopes of freeing her



# Spirit's Predicament

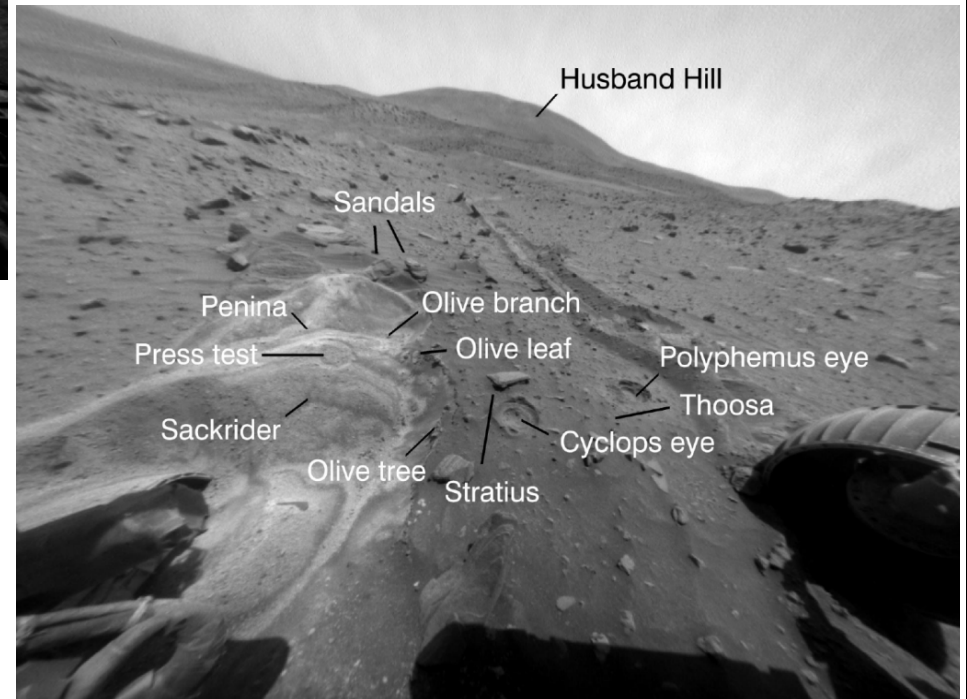
## Since Sol 1871

Sol 1871 Front Hazcam view



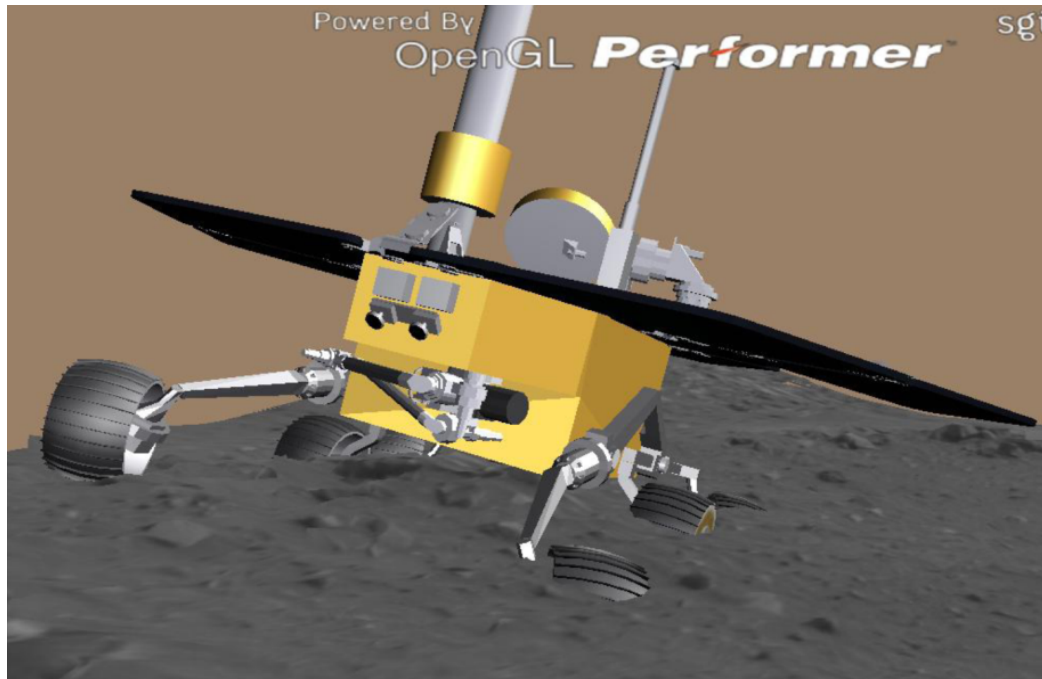
**View from the Front Hazard Avoidance Camera on Sol 1871. Note that Spirit has been driving in reverse, dragging its right-front wheel behind it. The right-front wheel has been un-drivable since ~ Sol 1000.**

**View from the Rear Hazard Avoidance Camera on Sol 1871. This image shows the reverse driving direction of Spirit with the right-rear wheel nearly fully embedded, and with the left-rear wheel buried up to the radius of the wheel.**



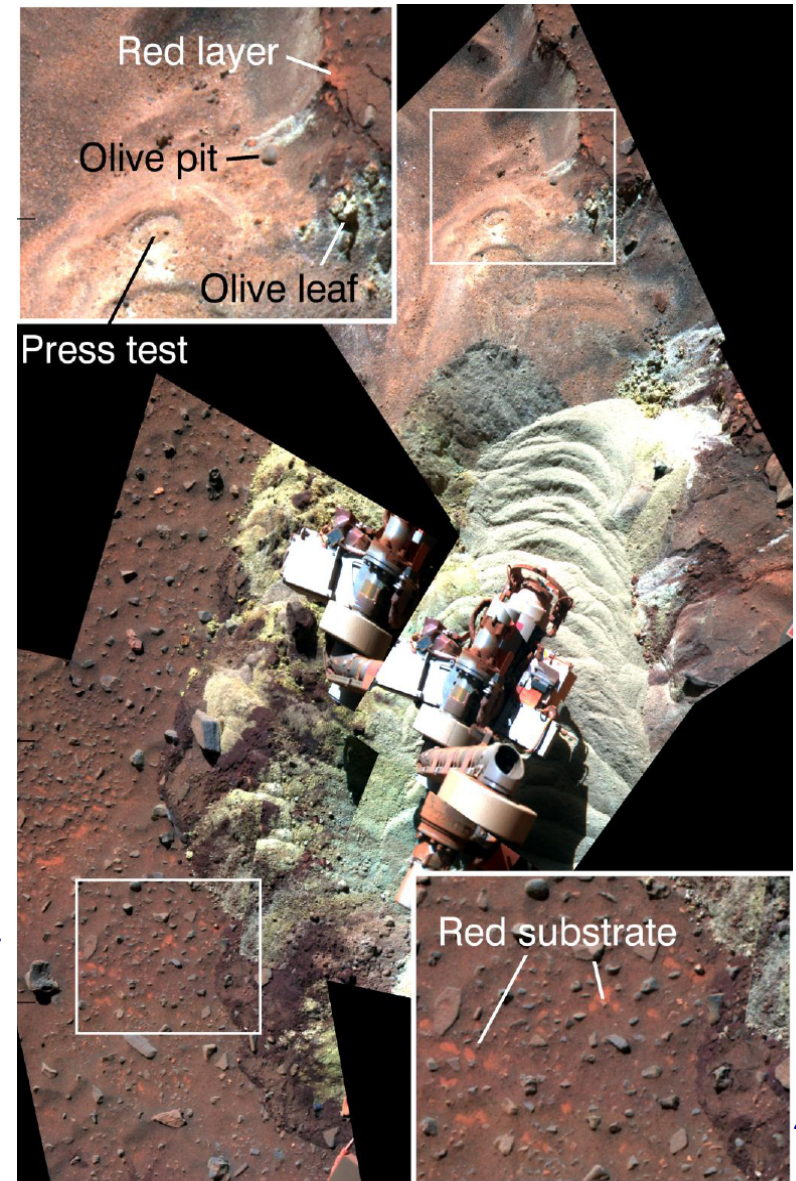


# Details of Spirit's Embedding



Ground support software visualization of Spirit's embedding

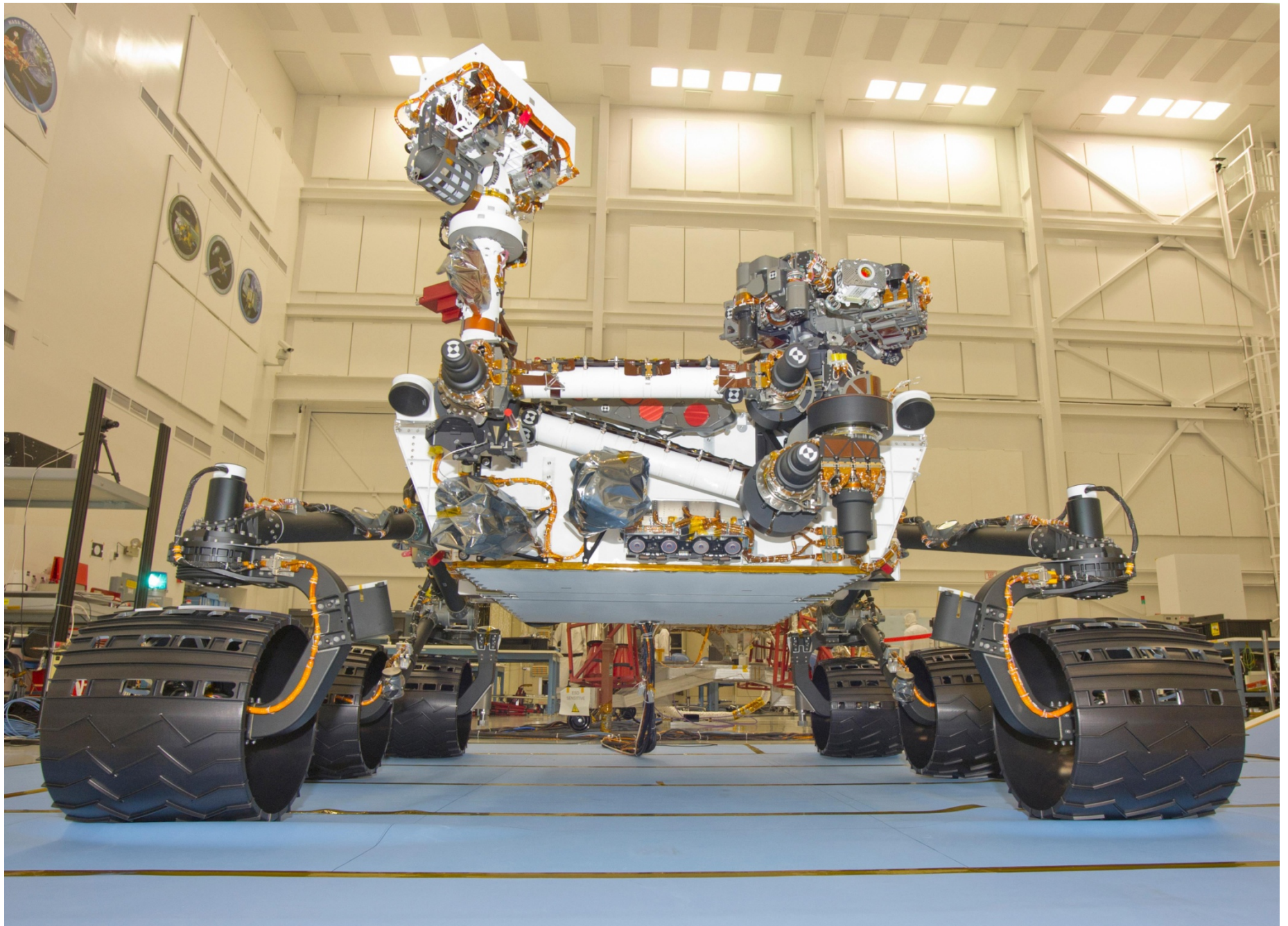
Rover color images, generated on the ground, from the Panoramic Cameras, showing the deployment of the robotic arm and the science instruments to the disturbed soft soils that having caused Spirit's embedding



MER SSTB (Surface System Test-Bed) Rover being driven into an embedding situation in a *Simulant* composed of Diatomaceous Earth and Fine Clay, to test extrication strategies for the Spirit rover



MSL Flight Rover, Curiosity, Front View





MSL Engineering Model being Tested on Dry, Loose Sand on a 20 Degree Slope 



8/19/2011

xTerramechanics

17