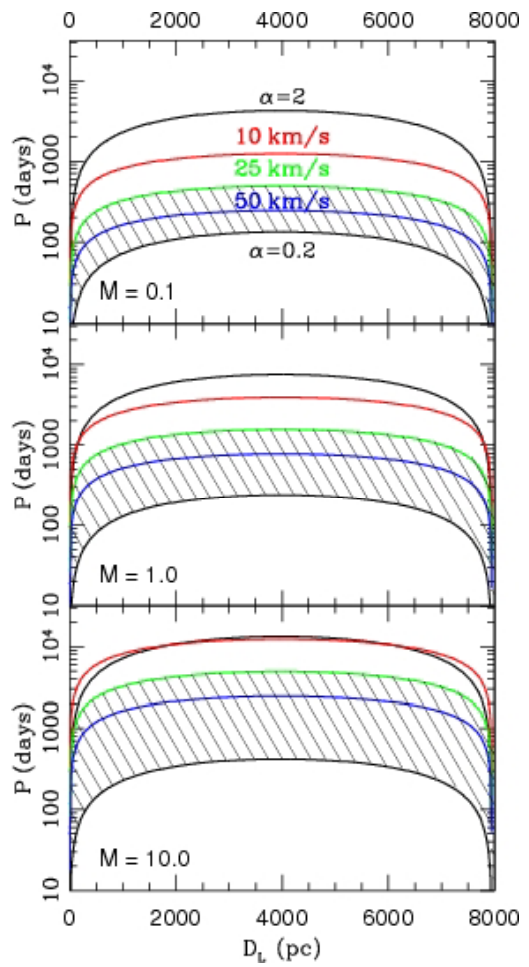
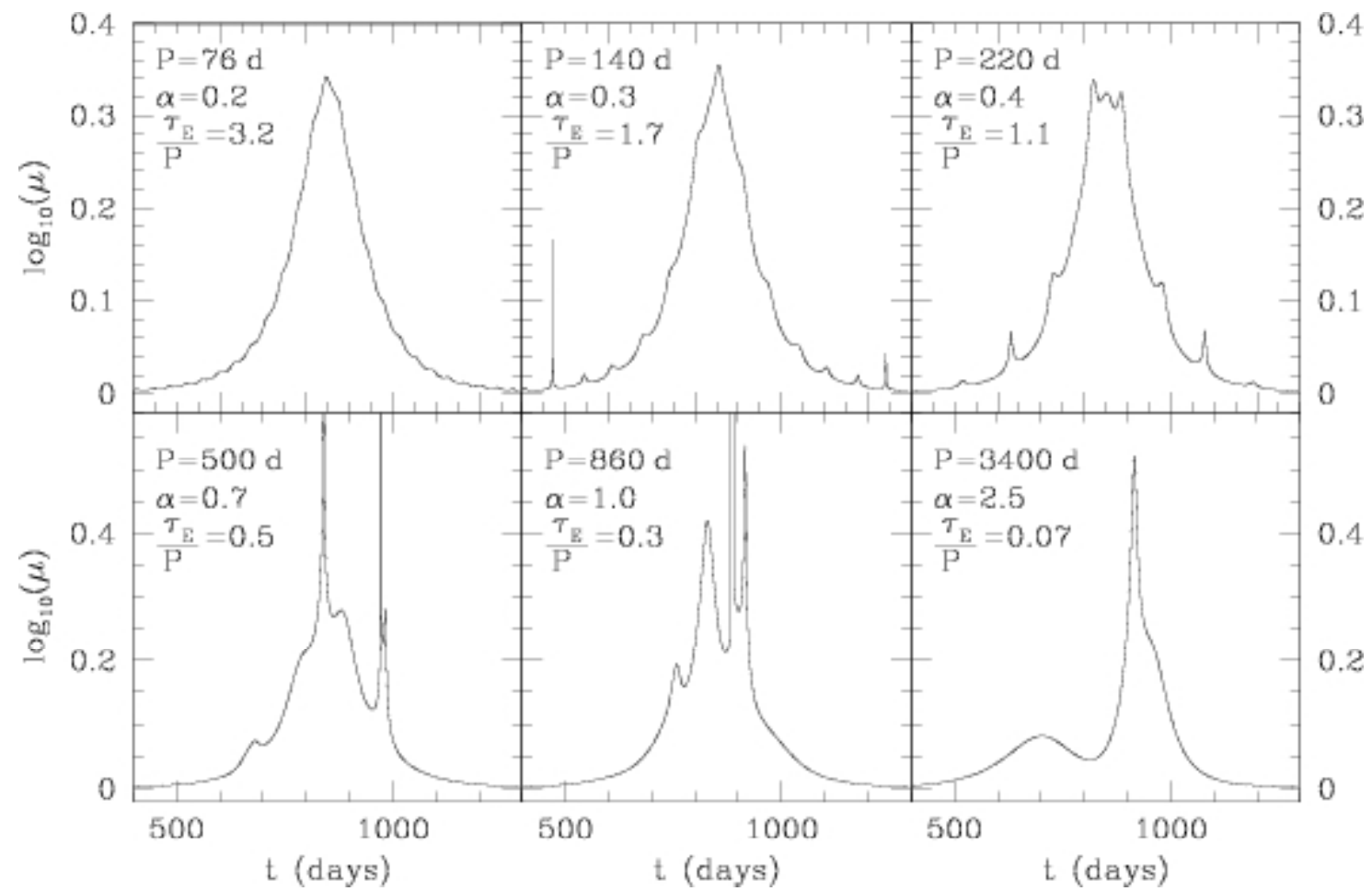


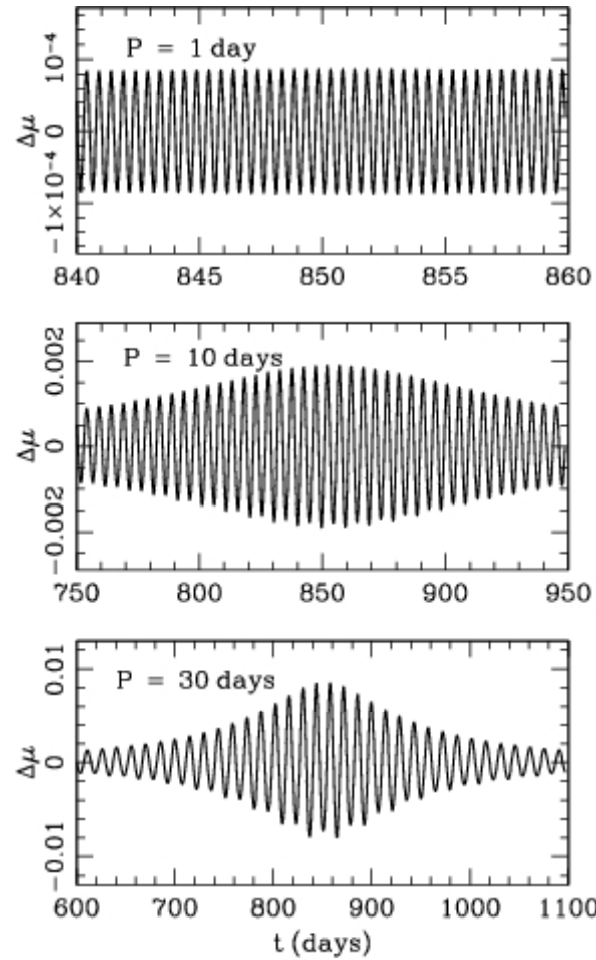
Extracting Periods from Binary-Lens Events

A Slightly Modified Lomb-Scargle
Approach

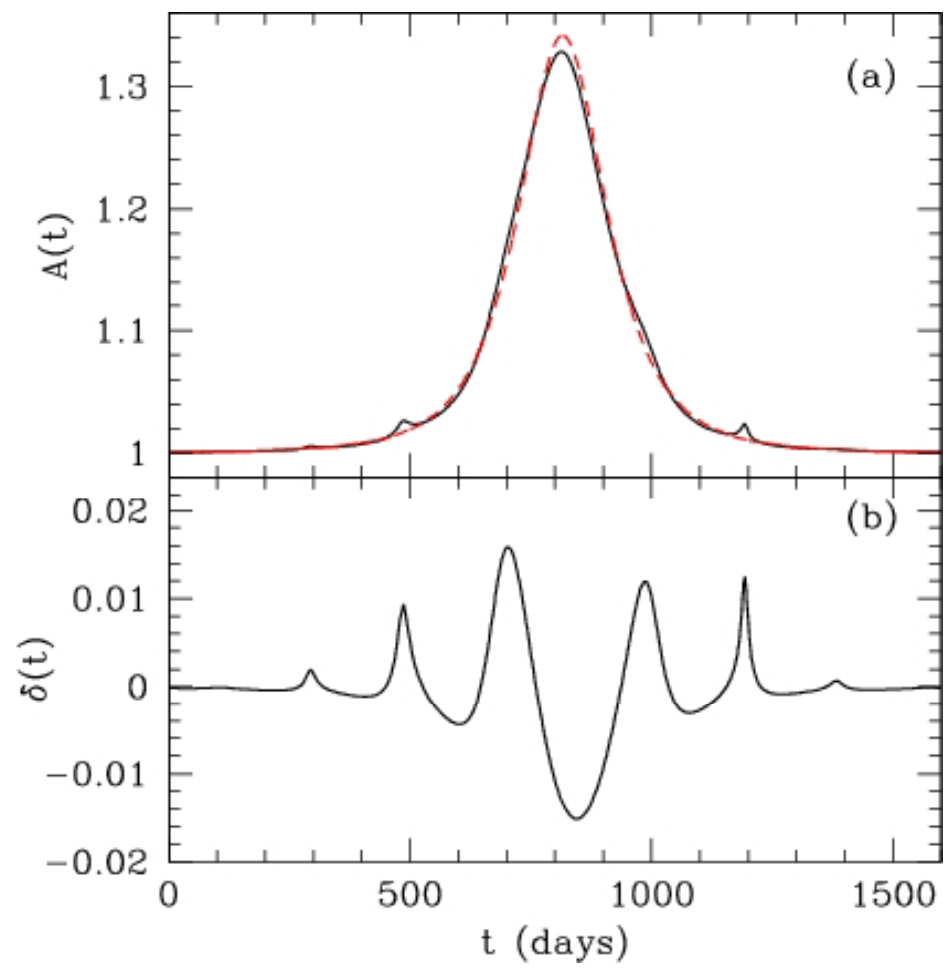
- Work in progress
- Xinyee (Harvey Mudd undergraduate),
Ann Esin, RD

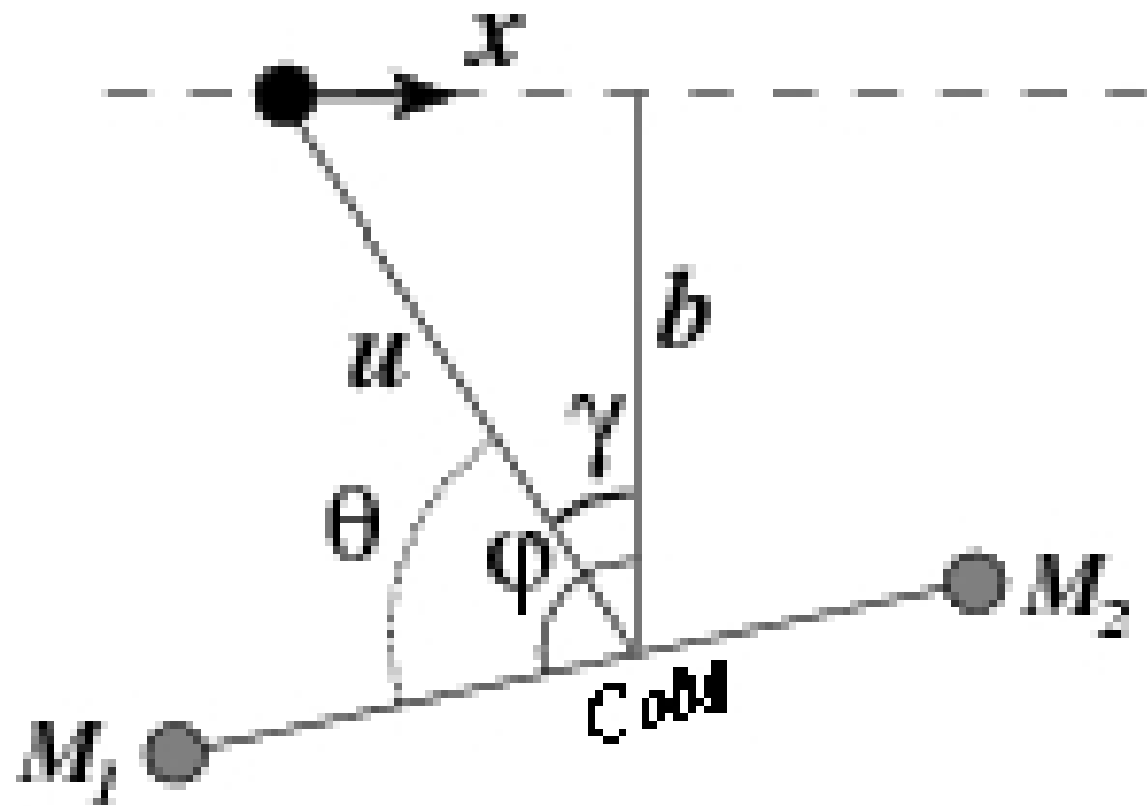


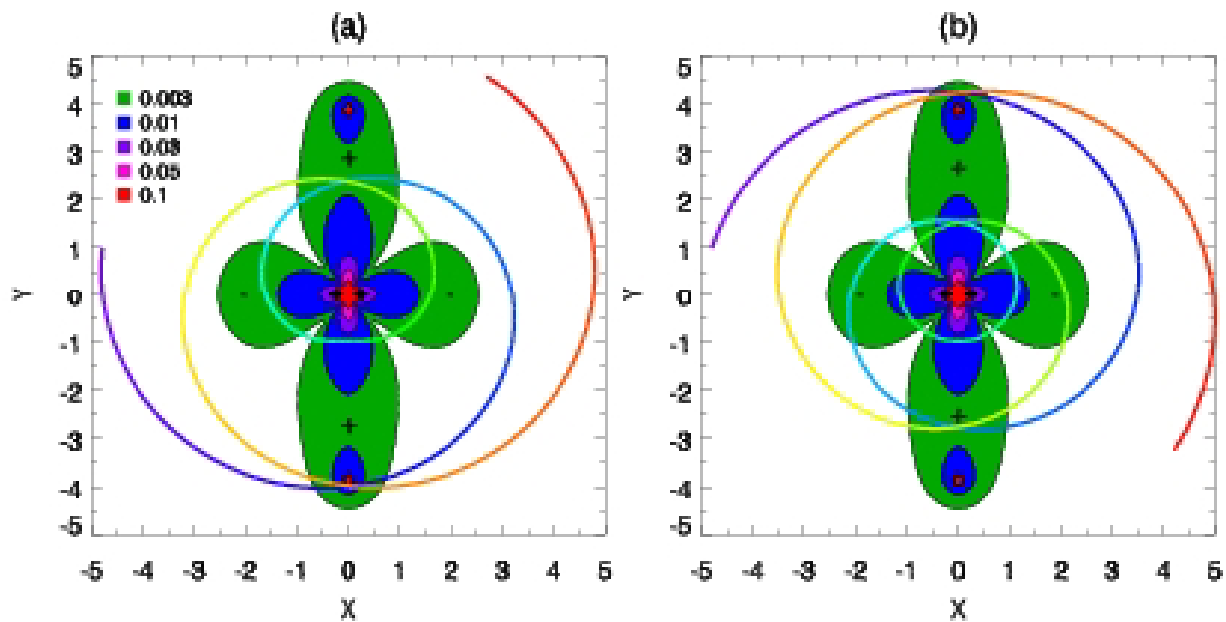




Kepler will be able to detect subtle effects.

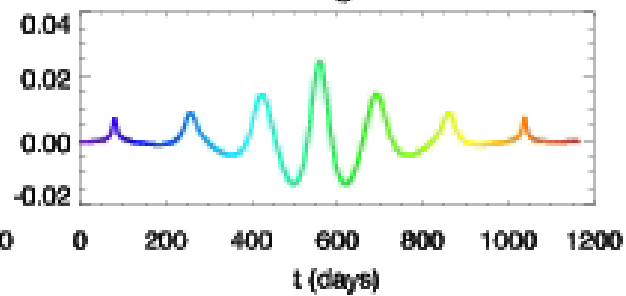
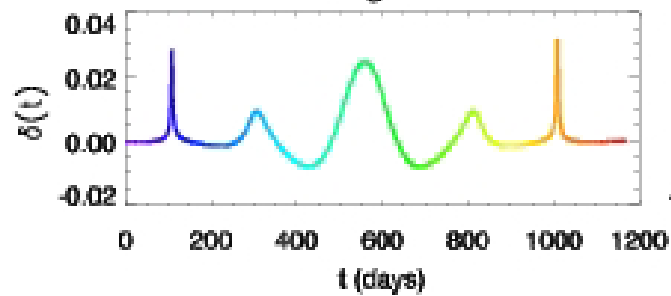


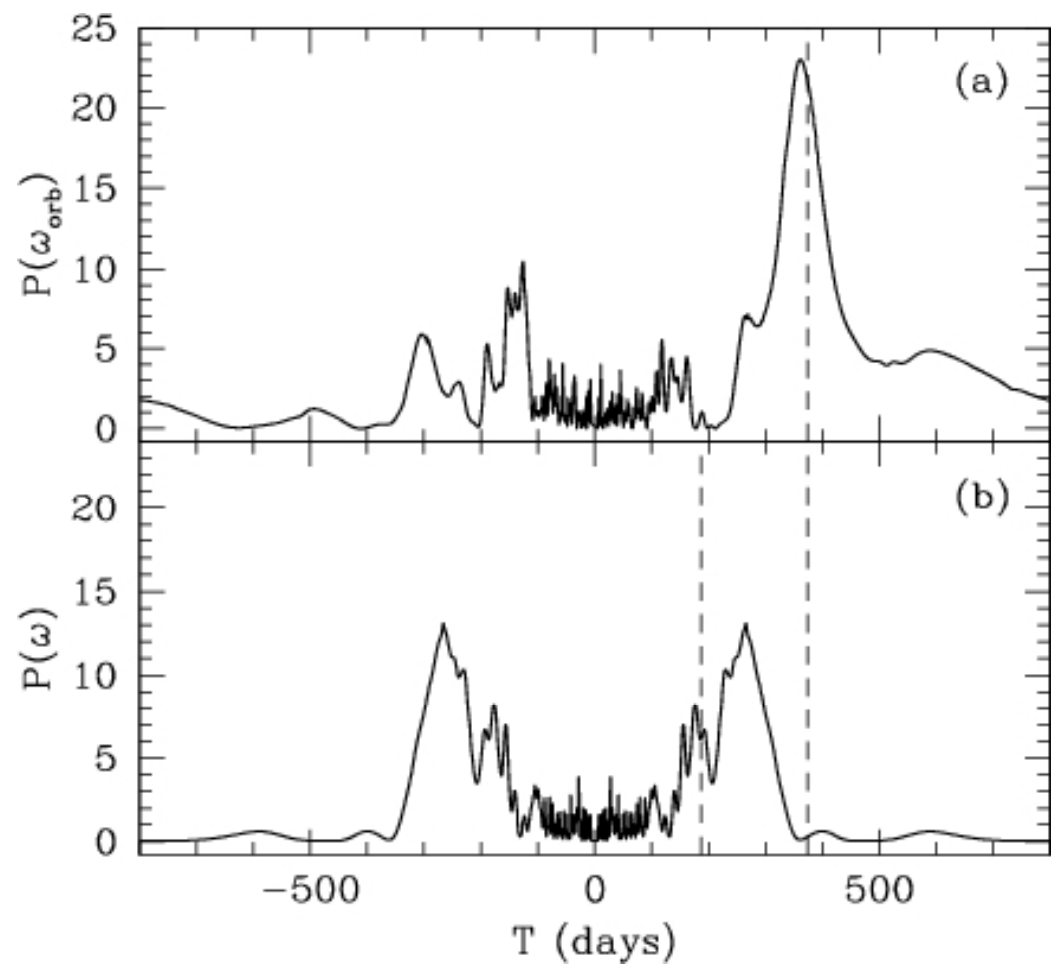


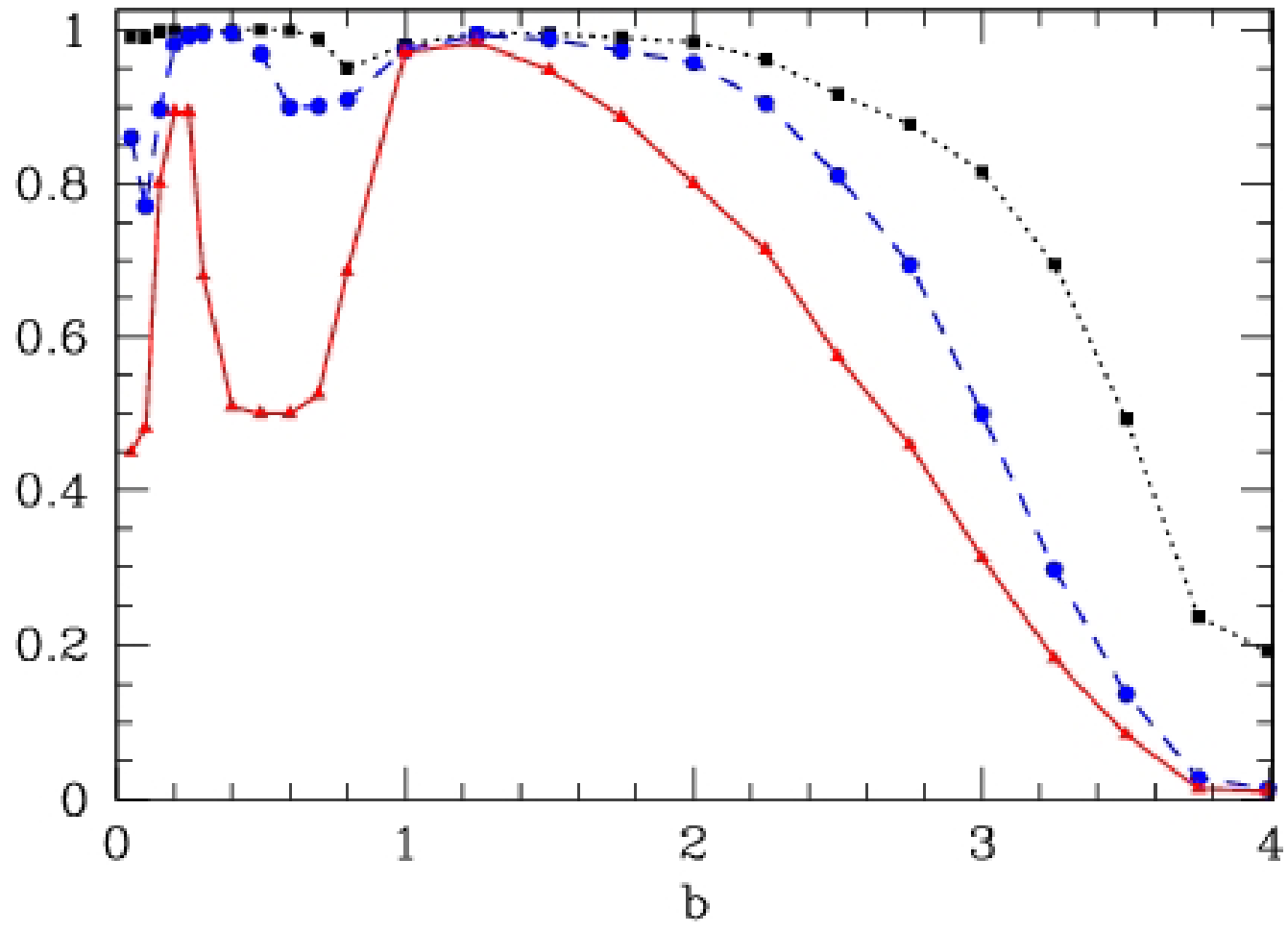


Prograde

Retrograde







- Orbital motion can be correctly identified if the system executes a complete orbit during the time in which the magnification is detectable.
- In a large fraction of the cases, the orbital period can be extracted.
- This can tell us a good deal about the system, esp. if it is near enough to be detected.